

MIAMI HARBOR DADE COUNTY, FLORIDA HYDROGRAPHIC EXAM SURVEY FY22

SURVEY NOTES

- REFER TO SURVEY NOS. 22-102.
 - SOUNDINGS ARE IN FEET AND TENTHS AND REFER TO NOAA'S REPORTED MEAN LOWER LOW WATER (MLLW) OF THE 1983-2001 TIDAL EPOCH.
 - TIDAL REDUCTIONS WERE OBTAINED UTILIZING REAL-TIME KINEMATIC (RTK) GPS AND REFERENCED TO MLLW UTILIZING A HYPACK KINEMATIC TIDE DATUM (KTD) MODEL NAMED "BROWARD-MIAMIDADE-MONROE-COLLIER_2018 05 02.KTD".
 - ALL ELEVATIONS ARE BELOW THE CHART DATUM UNLESS PRECEDED BY A (+) SIGN.
 - PLANE COORDINATES ARE BASED ON THE TRANSVERSE MERCATOR PROJECTION FOR THE EAST ZONE OF FLORIDA AND REFERENCED TO NORTH AMERICAN DATUM OF 1983, REALIZATION OF 2007 (NAD83).
 - ALL STATIONING REFERS TO THE CENTERLINE OF THE CHANNEL.
 - THIS SURVEY WAS PERFORMED USING REAL-TIME KINEMATIC (RTK) GPS POSITIONING WITH THE FOLLOWING REFERENCE BASE LOCATION:
REFERENCE BASE LOCATED AT "USCG MIAMI ARP" (OPUS PID: BBDD68)
TIDE STAFF SET NEAR BAYSIDE MARINA FROM "MH-16 RM-1" (PID: AC2178)
 - DEPTHS DEPICTED BY THIS SURVEY ARE REFERENCED TO MLLW, TIDAL EPOCH 1983-2001, AS REPORTED BY THE NATIONAL OCEANIC AND ATMOSPHERIC ADMINISTRATION (NOAA). NOAA'S VDATUM MODEL WAS USED AND CALIBRATED TO THE PUBLISHED MLLW HEIGHTS OF THE BENCHMARKS ASSOCIATED WITH THE TIDE GAGE SITE SPECIFIED BELOW:
NOAA TIDAL STATION 872-3165 MIAMI BISCAYNE BAY, FLORIDA FOR ALL CUTS.
 - VERTICAL MEASUREMENTS WERE MADE USING A RESON T-20P MULTI-BEAM SYSTEM OPERATING AT 300 KHZ AND A ROSS MODEL 835 SMART SOUNDER WITH A DUAL-FREQUENCY (28/200 KHZ) TRANSDUCER. ALL SOUNDINGS SHOWN ARE IN HIGH FREQUENCY.
- | VESSEL | DATE OF SURVEY | CUT |
|--------|----------------|---|
| SB-52 | 09 AUG 2022 | MAIN TURNING BASIN, CUT-4 |
| SB-52 | 10 AUG 2022 | CUT-3, CUT-4 |
| SB-52 | 11 AUG 2022 | CUT-3, SOUTH SHIP CHANNEL |
| SB-52 | 15 AUG 2022 | CUT-1, CUT-2 |
| SB-52 | 16 AUG 2022 | LUMMUS ISLAND T.B., DODGE ISLAND T.B., SOUTH SHIP CHANNEL |
| SB-52 | 17 AUG 2022 | DODGE ISLAND, SOUTH SHIP CHANNEL |
| SB-52 | 18 AUG 2022 | MISC. FILL-IN |
- AIDS TO NAVIGATION WERE LOCATED DURING THIS SURVEY.
 - THE INFORMATION DEPICTED ON THIS MAP REPRESENTS THE RESULTS OF SURVEYS MADE ON THE DATES INDICATED ABOVE AND CAN ONLY BE CONSIDERED AS INDICATING THE GENERAL CONDITIONS AT THAT TIME. THIS CHART IS SOLELY FOR THE DISTRIBUTION OF AVAILABLE DEPTHS AT THE TIME OF THE SURVEY.
 - SURVEY ACCURACY PERFORMANCE STANDARDS, QUALITY CONTROL, AND QUALITY ASSURANCE REQUIREMENTS WERE FOLLOWED DURING THIS SURVEY IN ACCORDANCE WITH USACE EM 1110-2-1003, HYDROGRAPHIC SURVEYING, 30 NOV 13 AND EM 1110-2-6056, STANDARDS AND PROCEDURES FOR REFERENCING PROJECT ELEVATION GRADES TO NATIONWIDE VERTICAL DATUMS, 31 DEC 10.

LEGEND	
	GPS MONUMENT
	LIGHTED BEACON
	GREEN DAYBEACON
	RED DAYBEACON
	RED LIGHTED BUOY
	GREEN LIGHTED BUOY
	CAN BUOY
	NUN BUOY
	TIDE STAFF
	PROJECT DEPTH

US Army Corps of Engineers
Jacksonville District
SAFETY ON THIS JOB
DEPENDS ON YOU

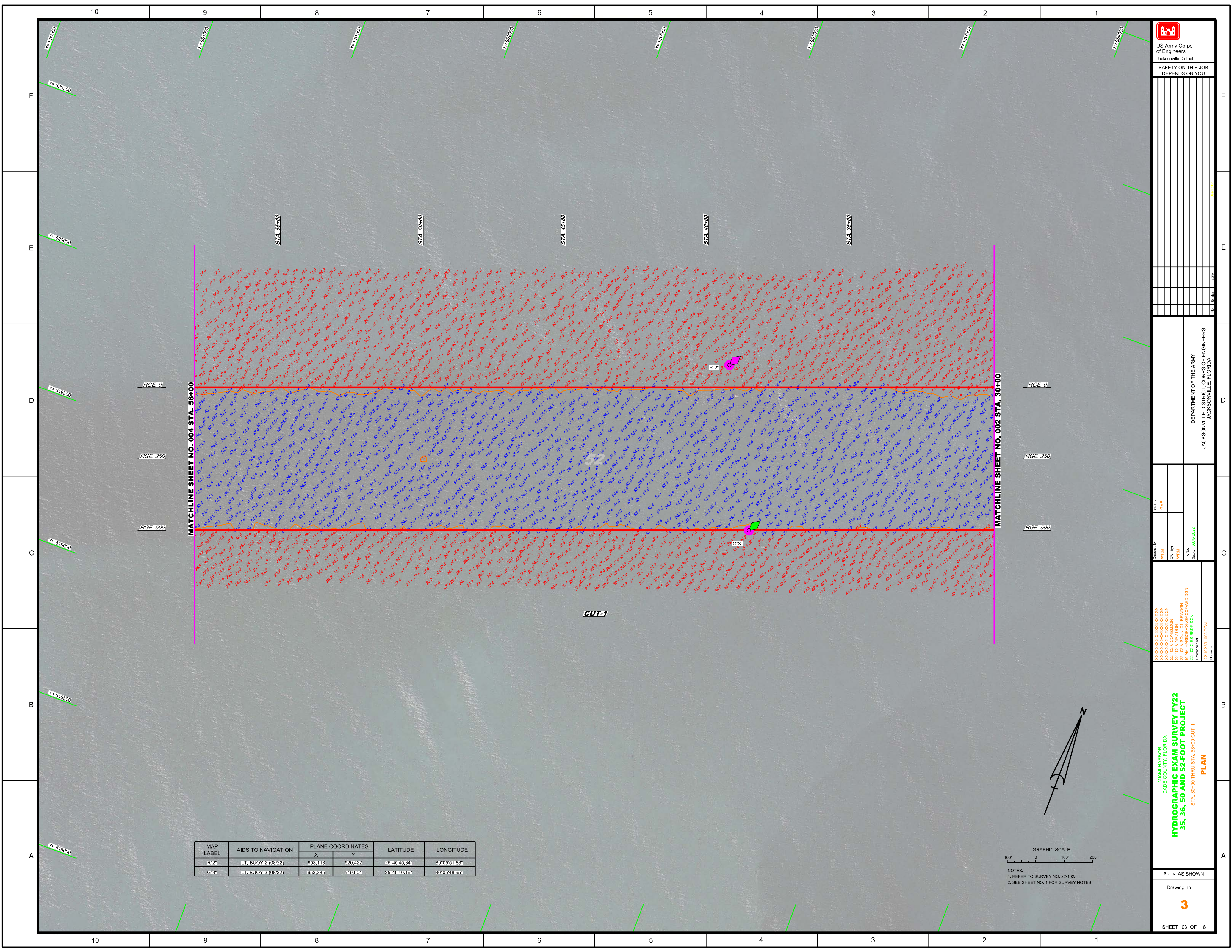
DEPARTMENT OF THE ARMY
JACKSONVILLE DISTRICT, CORPS OF ENGINEERS
JACKSONVILLE, FLORIDA


Checked By: GHR
Designed By: WRM
Drawn By: WRM
File No: 22-102-52-50-52-FOOT-PROJECT
Date: AUG 2022
Reference File: 22-102-52-50-52-FOOT-PROJECT

MIAMI HARBOR
DADE COUNTY, FLORIDA
**HYDROGRAPHIC EXAM SURVEY FY22
35, 36, 50 AND 52-FOOT PROJECT**
INDEX, LOCATION AND VICINITY
MAP

Scale: AS SHOWN
Drawing no.
1

SHEET 01 OF 18




 US Army Corps of Engineers
 Jacksonville District
 SAFETY ON THIS JOB
 DEPENDS ON YOU

Checked by:	GHR
Designed by:	WRM
Drawn by:	WRM
Reviewed by:	WRM
Scale:	AUG 2022

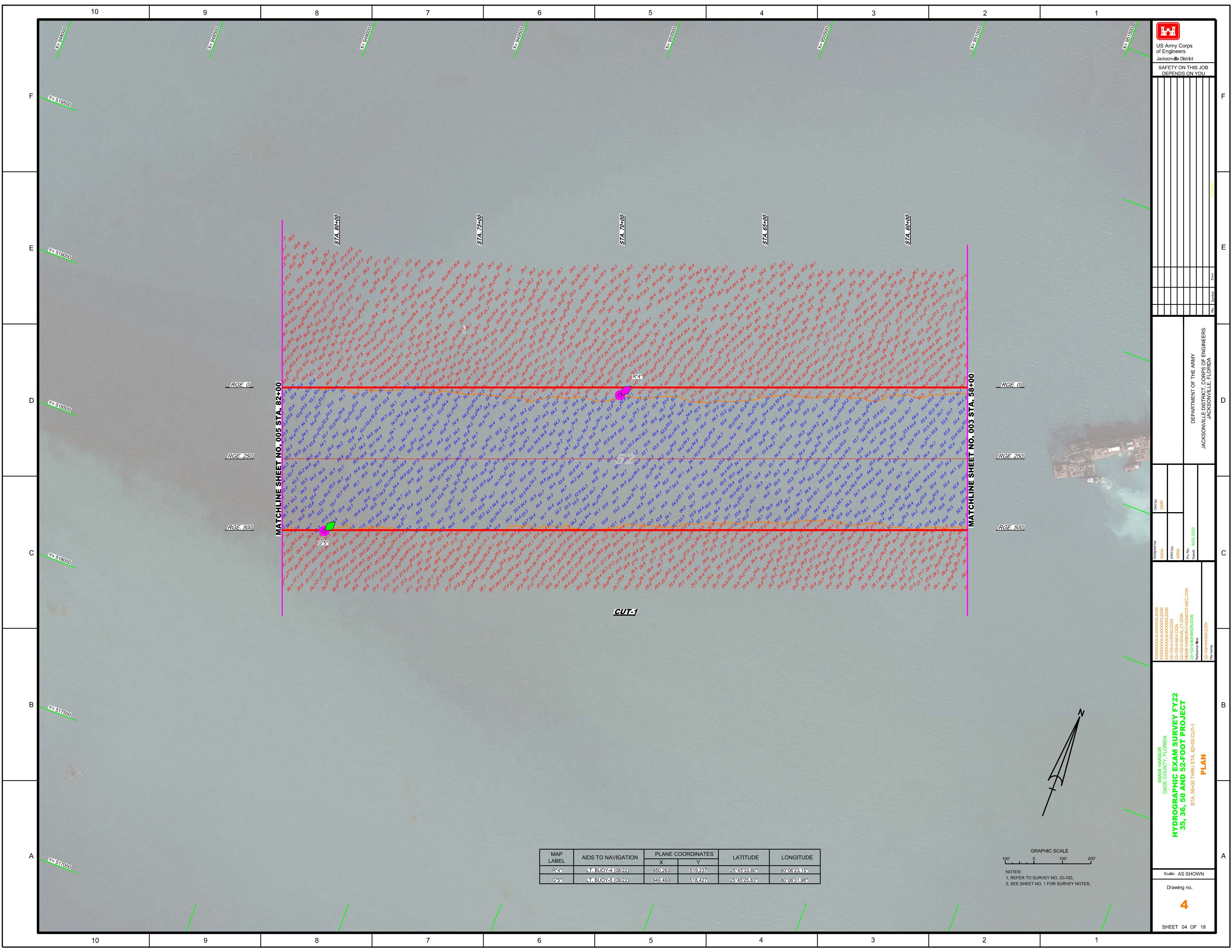
MAMI HARBOR
 DADE COUNTY, FLORIDA
HYDROGRAPHIC EXAM SURVEY FY22
35, 36, 50 AND 52-FOOT PROJECT
 STA. 30+00 THRU STA. 58+00 CUT-1
PLAN

Scale: AS SHOWN
 Drawing no.
3
 SHEET 03 OF 18

MAP LABEL	AIDS TO NAVIGATION	PLANE COORDINATES		LATITUDE	LONGITUDE
		X	Y		
R'2*	LT BUOY 2 (08/22)	953.118	520.422	25°48'45.34"	80°05'51.83"
G'3*	LT BUOY 3 (08/22)	953.385	519.904	25°48'40.19"	80°05'48.95"



NOTES:
 1. REFER TO SURVEY NO. 22-102.
 2. SEE SHEET NO. 1 FOR SURVEY NOTES.



US Army Corps of Engineers

 Jacksonville District

 SAFETY ON THIS JOB

 DEPENDS ON YOU

DEPARTMENT OF THE ARMY

 JACKSONVILLE DISTRICT, CORPS OF ENGINEERS

 JACKSONVILLE, FLORIDA

Call by: GHR

 Designed by: WRM

 Drawn by: WRM

 Date: AUG 2022

MAMI HARBOR

 DADE COUNTY, FLORIDA

HYDROGRAPHIC EXAM SURVEY FY22

35, 36, 50 AND 52-FOOT PROJECT

 STA. 59+00 THRU STA. 82+00 CUT-1

PLAN

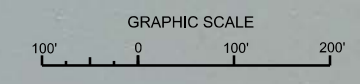
Scale: AS SHOWN

 Drawing no.

4

SHEET 04 OF 18

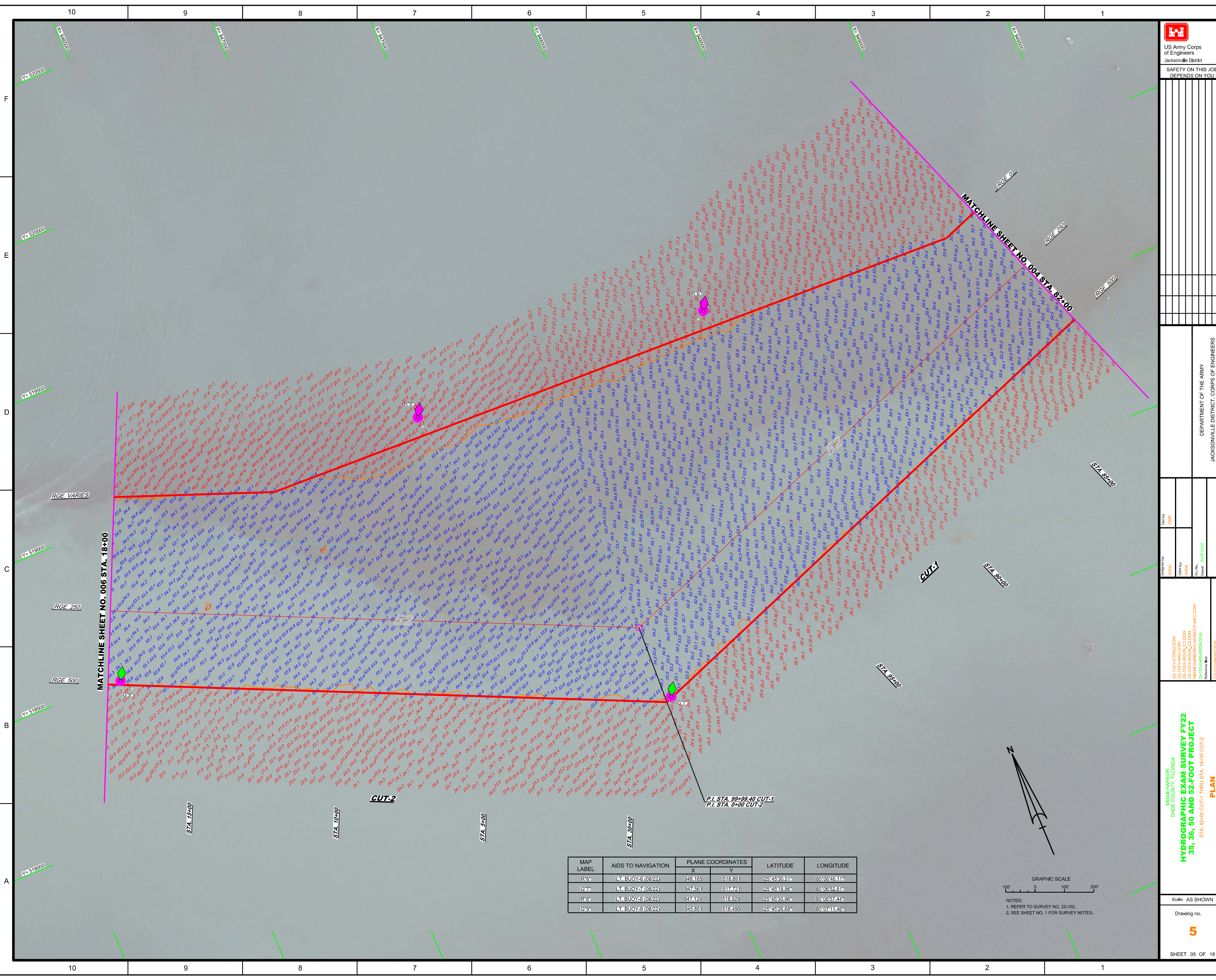
MAP LABEL	AIDS TO NAVIGATION	PLANE COORDINATES		LATITUDE	LONGITUDE
		X	Y		
R-4	LT. BUOY-4 (08/22)	950,263	519,237	25°45'33.80"	80°06'23.15"
G-5	LT. BUOY-5 (08/22)	949,460	518,427	25°45'25.83"	80°06'31.98"



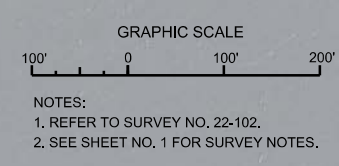
NOTES:

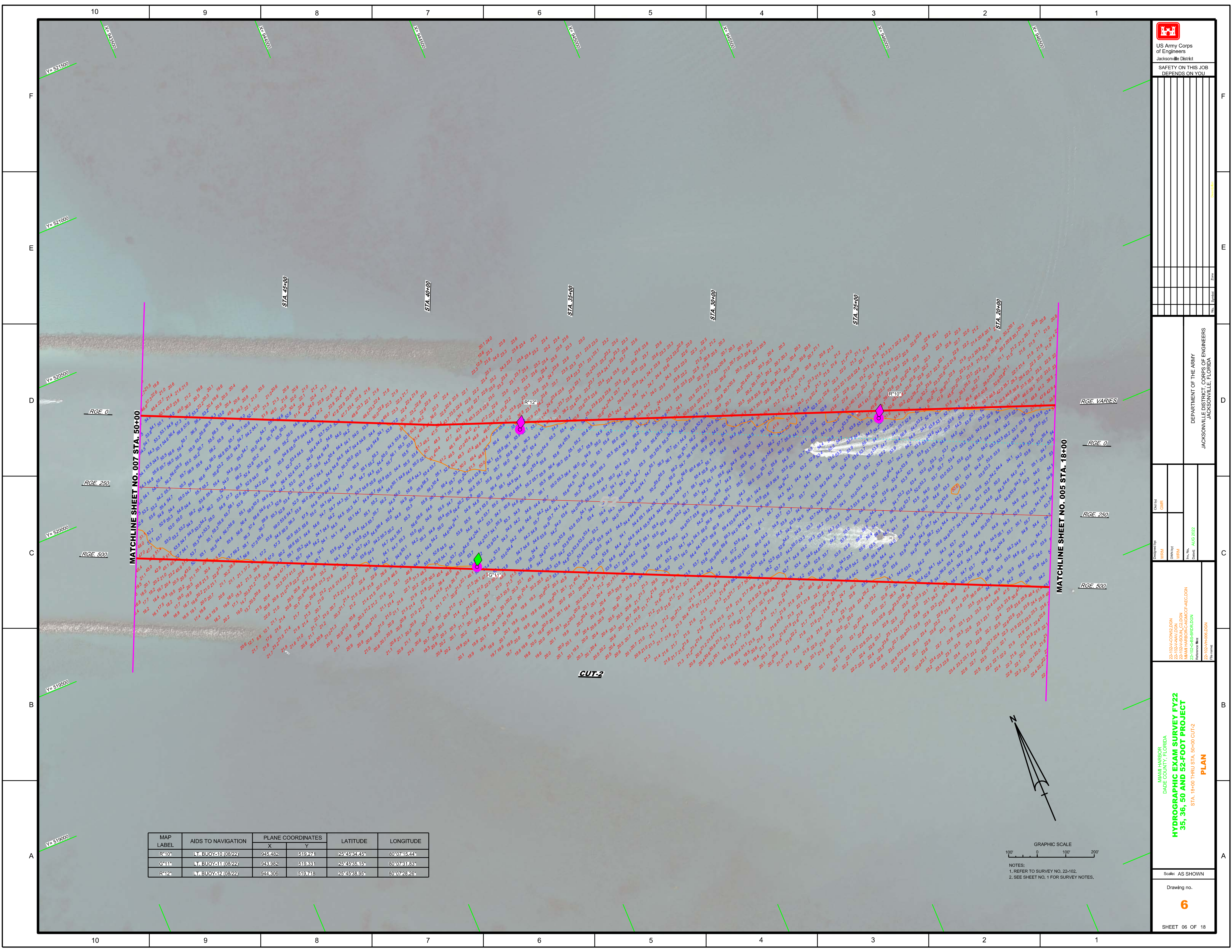
 1. REFER TO SURVEY NO. 22-102.

 2. SEE SHEET NO. 1 FOR SURVEY NOTES.

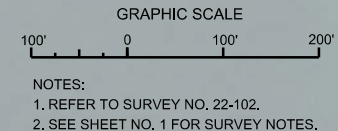


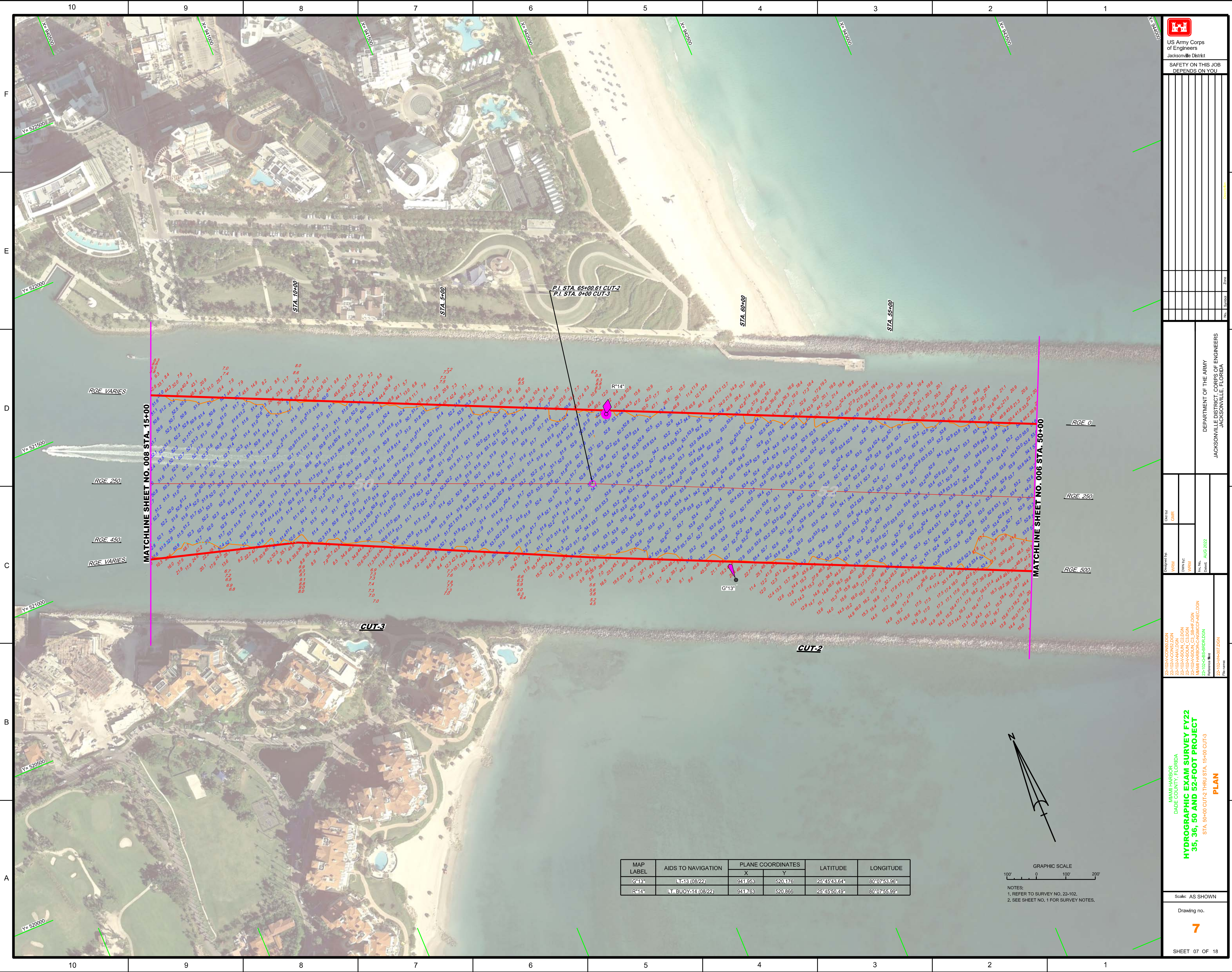
MAP LABEL	AIDS TO NAVIGATION	PLANE COORDINATES		LATITUDE	LONGITUDE
		X	Y		
R-6*	LT. BUOY-6 (0822)	948.165	518.891	25°45'30.51"	80°06'48.11"
G-7*	LT. BUOY-7 (0822)	947.561	517.721	25°45'18.96"	80°06'52.81"
R-8*	LT. BUOY-8 (0822)	947.729	518.929	25°45'30.95"	80°06'57.44"
G-9*	LT. BUOY-9 (0822)	945.851	518.490	25°45'26.69"	80°07'11.46"



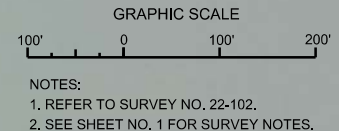


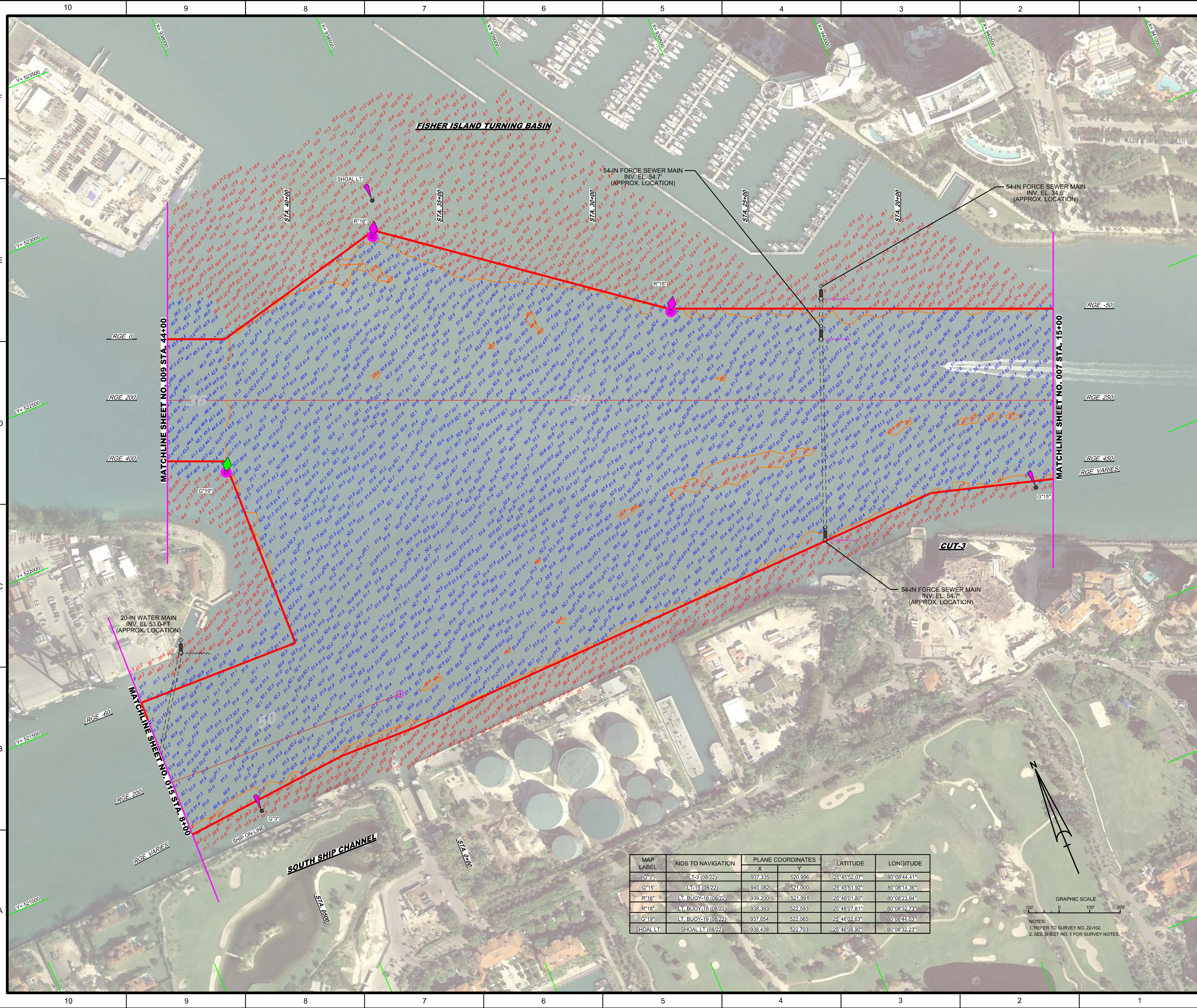
MAP LABEL	AIDS TO NAVIGATION	PLANE COORDINATES		LATITUDE	LONGITUDE
		X	Y		
R10*	LT BUOY 10 (08/22)	945482	519271	25°45'34.45"	80°07'15.44"
G11*	LT BUOY 11 (08/22)	943982	519331	25°45'35.15"	80°07'31.83"
R12*	LT BUOY 12 (08/22)	944306	519718	25°45'38.95"	80°07'28.26"





MAP LABEL	AIDS TO NAVIGATION	PLANE COORDINATES		LATITUDE	LONGITUDE
		X	Y		
G*13*	11 BUOY 14 (0822)	941.853	520.176	25°45'43.64"	80°07'53.96"
R*14*	11 BUOY 14 (0822)	941.763	520.866	25°45'50.49"	80°07'55.99"





US Army Corps of Engineers
Jacksonville District
SAFETY ON THIS JOB
DEPENDS ON YOU

DEPARTMENT OF THE ARMY
JACKSONVILLE DISTRICT, CORPS OF ENGINEERS
JACKSONVILLE, FLORIDA

Drawn by: GRL
Checked by: WRM
Designed by: WRM
Date: AUG 2022

22-102A-CO-000.DGN
22-102A-HV-000.DGN
22-102A-CO-000.DGN
22-102A-BS-000.DGN
Reference File: 22-102A-HR-000.DGN

MIAMI HARBOR
DADE COUNTY, FLORIDA
HYDROGRAPHIC EXAM SURVEY FY22
35, 36, 50 AND 52-FOOT PROJECT
STA. 0+00 THRU STA. 4+00 CUT-3 AND
STA. 0+00 THRU STA. 8+00 SOUTH SHIP CHANNEL
PLAN

Scale: AS SHOWN

Drawing no. **8**

SHEET 08 OF 18

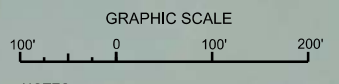
MAP LABEL	AIDS TO NAVIGATION	PLANE COORDINATES		LATITUDE	LONGITUDE
		X	Y		
G*3	LT-3 (08/22)	937,335	520,996	25°45'52.0"	80°08'44.41"
G*15	LT-15 (08/22)	940,082	521,000	25°45'51.92"	80°08'44.36"
R*16	LT, BUOY-16 (08/22)	939,200	521,991	25°46'01.80"	80°08'23.94"
R*18	LT, BUOY-18 (08/22)	938,393	522,593	25°46'07.81"	80°08'32.73"
G*19	LT, BUOY-19 (08/22)	937,654	522,065	25°46'02.63"	80°08'44.03"
SHOAL T	SHOAL T (08/22)	938,438	522,703	25°46'08.90"	80°08'32.23"

NOTES:
1. REFER TO SURVEY NO. 22-102.
2. SEE SHEET NO. 1 FOR SURVEY NOTES.



MATCHLINE SHEET NO. 010 STA. 23+00

MATCHLINE SHEET NO. 008 STA. 44+00



NOTES:
 1. REFER TO SURVEY NO. 22-102.
 2. SEE SHEET NO. 1 FOR SURVEY NOTES.